

# THE Anchor Project

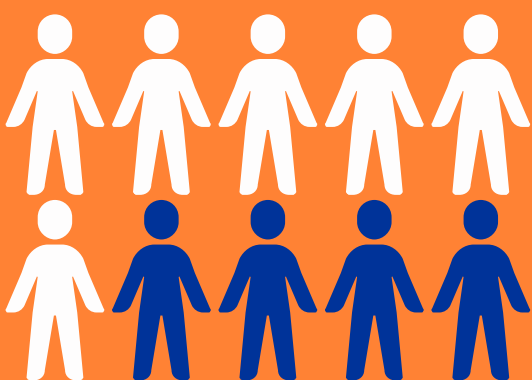
Supporting Our Community Together

A collaborative mission to address the opioid crisis in the BRADD region.

## PHASE 1

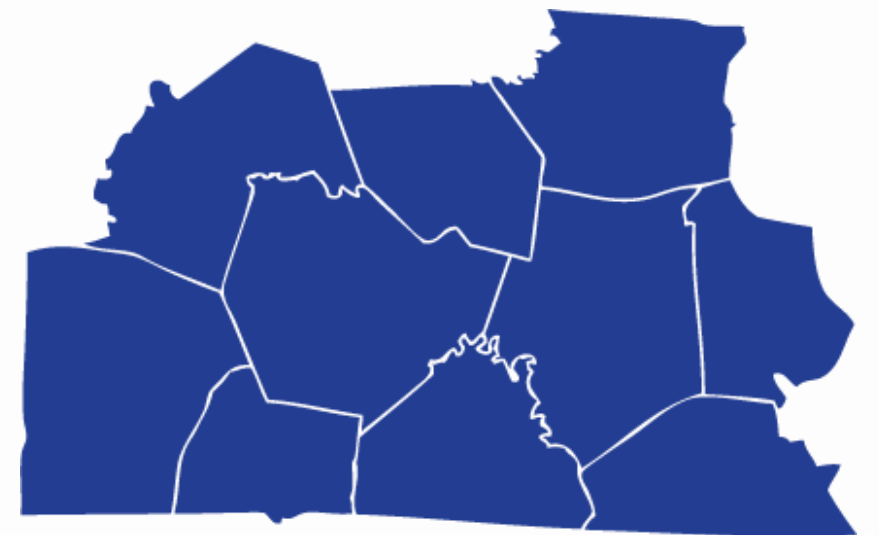
### Mental Health Crisis Intake Center

- Immediate mental health crisis support.
- 24/7 access to professional assessments and care.
- A safe, welcoming space for individuals in need.
- Partnering with law enforcement to ensure efficient and timely transfers and referrals.
- Construction to begin 2025!



## What is the Anchor Project?

The Anchor Project is the result of advocacy efforts from local governments in Southcentral Kentucky to bring about this unique service delivery model. The Kentucky General Assembly has allocated \$20M to this regional pilot for capital expenses in the Fiscal Years 2025/2026.



## Why the Anchor Project is Vital?

- Opioids are a leading cause of preventable deaths in our region.
- 1 in 5 people struggle with mental health challenges annually.
- The first model in the state to seamlessly integrate and bring all 3 facilities to the BRADD region.

## PHASE 2

### The Life Learning Center

- Long-term programs to rebuild lives and achieve independence.
- Life skills training, education, and job readiness.
- Evidence-based recovery to workforce program.
- Operations to start in the region late 2025/early 2026!



## What You Can Do:

- Share information with friends and family.
- Volunteer at community events.
- Advocate for mental health and opioid use awareness in schools.
- Become an Anchor Project Ambassador by reaching out to our new Office of Drug Control Policy!

## PHASE 3

### The Office of Drug Control Policy (ODCP)

- Regional collaboration and the future go to hub for mental health resources.
- Assisting cities and counties with Opioid Abatement funds.
- Connecting families and individuals with essential supports in prevention, treatment, recovery & the continuum of care.
- Opened December 2024!



BARREN RIVER



SCAN  
ME

