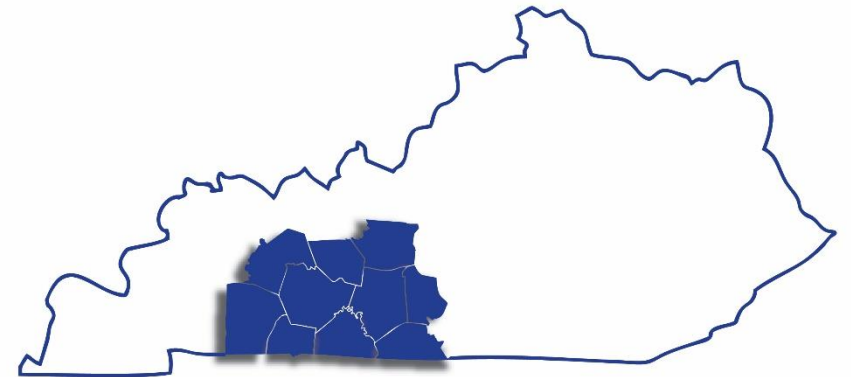


Greenway & Sidewalk Projects in the BRADD Region

Ethan Bates
Regional Transportation Planner



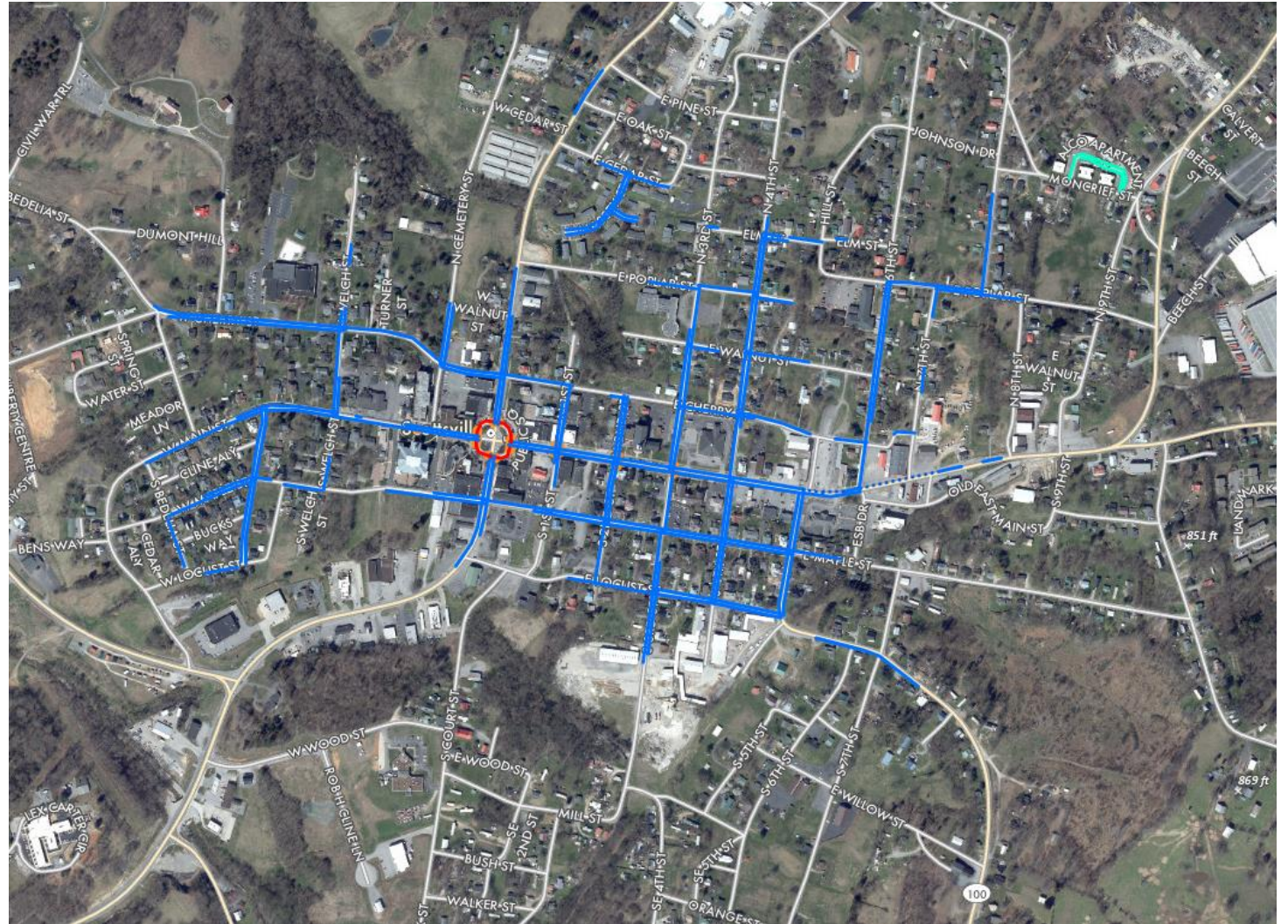
BARREN RIVER



AREA DEVELOPMENT DISTRICT

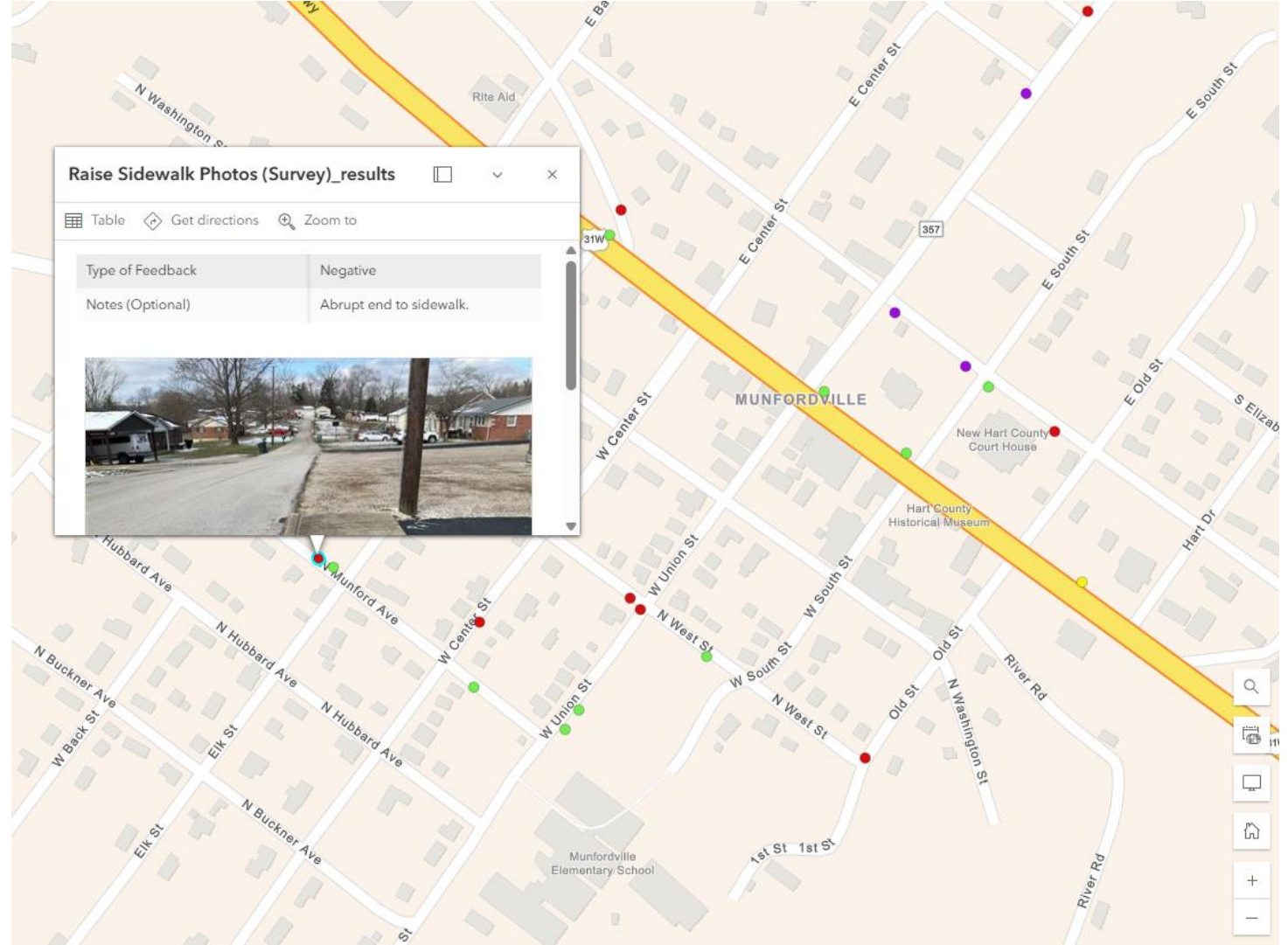
BRADD's RAISE Grant: Community Connections

- Create comprehensive inventory of all sidewalks & paths in the region.
- Include facilities like crosswalks & bike lanes.
- Available at BRADD's public data portal.



BRADD's RAISE Grant: Community Connections

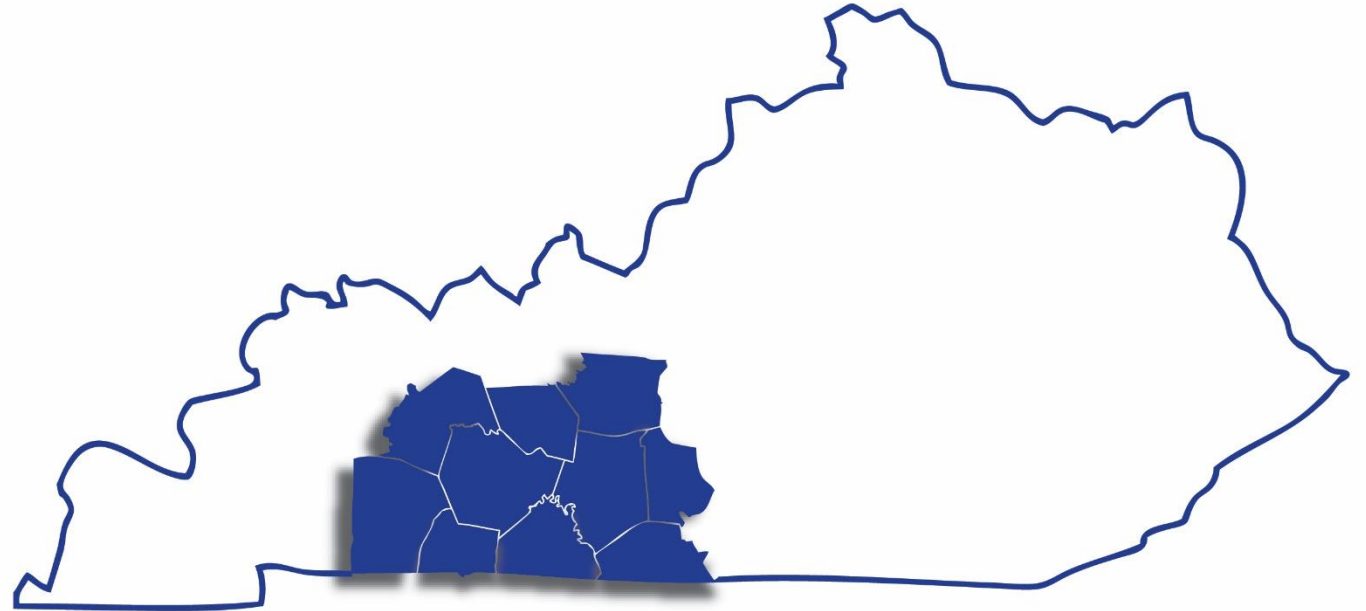
- Use photo surveys to create points on maps.
- Points represent positive & negative features for pedestrians.
- Merge the two datasets to create an in-depth inventory of pedestrian infrastructure.



BRADD's RAISE Grant: Community Connections

- Just started: Complete Streets Preliminary Engineering Designs
 - For projects in Franklin, Glasgow, Russellville, Scottsville, & Tompkinsville
- Upcoming: Regional Greenways Feasibility Study

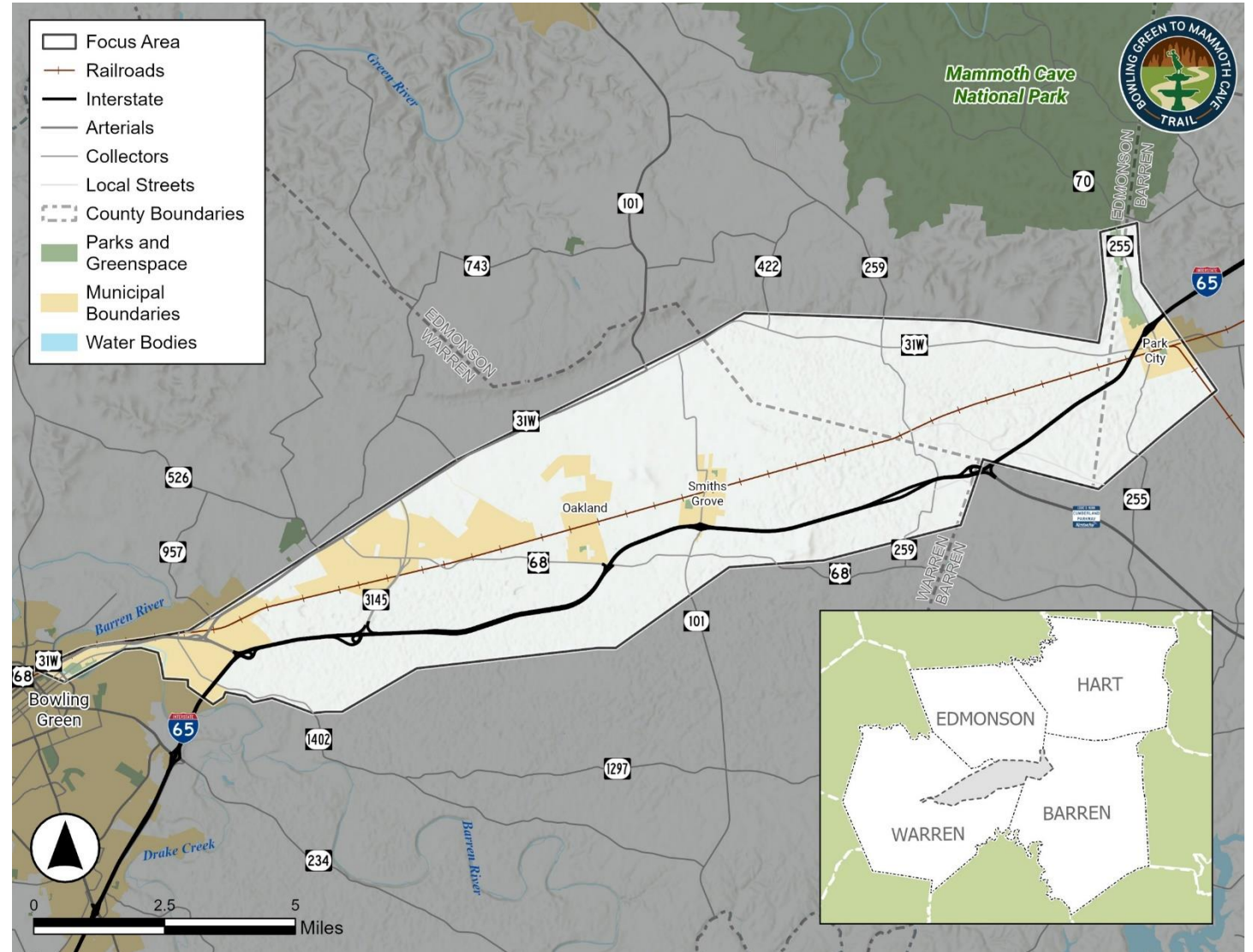
BARREN RIVER



AREA DEVELOPMENT DISTRICT

BRADD's FLAP Grant: BG-MC Trail Feasibility Study

- Study for a multi-use dedicated path to connect downtown BG to Mammoth Cave.
- Crosses 3 counties & 5 cities.
- Evaluating optimal layouts, trailheads, economic impact, public engagement, and implementation plan.



BRADD's FLAP Grant: BG-MC Trail Feasibility Study

- June 4th RTC meeting @ BRADD
- Also holding Public Engagement meeting June 4.
- Survey available to give comments.
 - Available on next slide.



STUDY OVERVIEW

The Barren River Area Development District (BRADD) Bowling Green to Mammoth Cave National Park (BG to MCNP) Trail Feasibility Study will develop a plan for a dedicated, off-road trail and supporting trailhead facilities for bicyclists and pedestrians, connecting Bowling Green to Mammoth Cave National Park.

PURPOSE AND NEED STATEMENT

The purpose of this study is to provide a safe, attractive, and sustainable connection for pedestrians and bicyclists from the Riverfront Trails near downtown Bowling Green to the Mammoth Cave Railroad Hike and Bike Trail in Park City and to enhance tourism and economic development opportunities to the Cave Country Region, including its many rural communities.

PROJECT GOALS

The supporting goals for this proposed shared-use facility include:



Safely and securely accommodate both pedestrians and bicyclists.



Connect to both the urban and rural communities within the Cave Region.



Provide a level of access and use that accommodates the ability of all users.



Provide a unique outdoor experience for visitors and residents that incorporates the natural, historical, and cultural characteristics of the Cave Region.

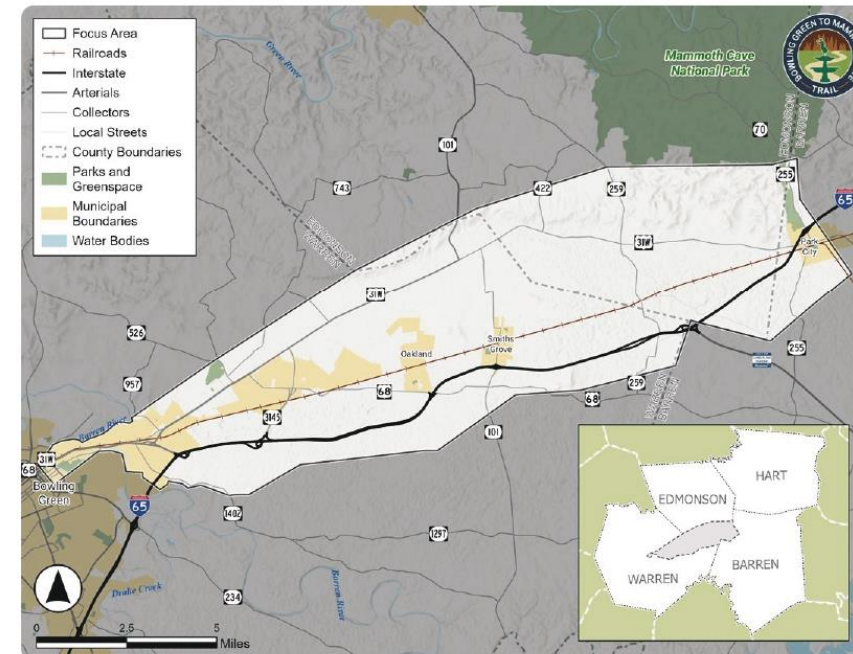


Provide separation from motor vehicle traffic.



Develop, deliver, and maintain in a sustainable and fiscally responsible manner.

STUDY AREA



SCAN BELOW
TO
LEARN MORE!



www.bgmctrail.com

BARREN RIVER



Contact Info

Ethan Bates, Regional Transportation Planner
177 Graham Avenue, Bowling Green, KY 42101
Ethan.Bates@bradd.org
(270) 306-4064



BARREN RIVER



AREA DEVELOPMENT DISTRICT

Bowling Green Riverfront Park

Brent Childers
City of Bowling Green



FOR: RIVERFRONT PARK
BOWLING GREEN, KENTUCKY



wood.

DESIGNED AND DRAWN BY: Ron HUFFMAN, ASIA, ACP
NOT FOR CONSTRUCTION
APRIL 2016
REVISED AUGUST 2018

RIVERFRONT PARK MASTER PLAN



MKSK



BOWLING GREEN RIVERFRONT PARK

1

NORTH

0 100'

BOWLING GREEN RIVERFRONT PARK - PHASE 1

